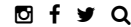


# ARTIST PROFILE

[ISSUES](#) [CONTENTS](#) [ABOUT US](#) [ADVERTISE](#) [SUBSCRIBE](#)

## Camille Serisier

By Jillian Grant

In her short career, Brisbane-based artist Camille Serisier has covered serious ground – making her way up the Australian east coast and enchanting people along the way with her unique brand of art making.



Hawaiian Bird Song #2, 2012, photographic print, 50 x 50cm. Photography: Sam Scoufos



Born in Wollongong, New South Wales in 1982, Serisier grew up in Sydney where she studied drawing at the prestigious Julian Ashton Art School and the National Art School. Following this early art education, she went on the move after being awarded a National Undergraduate Scholarship from the Australian National University, where she studied for her undergraduate degree, graduating with First Class Honours. This early success did not slow as she received a scholarship for the New York Studio School.

Serisier explores the relationship of humans and the environment through representations of nature in Australian culture. Looking at how this relationship manifests in some of Australia's significant cultural repositories, Serisier visits theatre, early childhood education and other cultural mythologies in her work, extracting a narrative of exchange. She is interested in how these experiences, in early life and inherited cultural ideas, shape how we perceive the world. "It is this cultural inheritance that orients contemporary attitudes to the environment," she says. "Chief among its effects, this heritage distances Australians from nature, rendering it merely as cause and effect, a challenge to be conquered, or as a spectacle for our passive consumption."

2013 was a big year for Serisier, who held solo exhibitions at SLOT Space, Sydney, Inhouse ARI, Brisbane, MOP Projects, Sydney, and Level, Brisbane. Stunning watercolours reflect her background in theatrical design, from which she has derived a sophisticated understanding of space and form. Currently basing herself in Brisbane, Serisier prolifically produces works, building on and developing a distinct and refined style.

### EXHIBITION

**The Wonderful Land of Oz**

**Thursday 6 November**

[Spiro Grace Art Rooms](#)



### Post a Comment

Your email is *never* published nor shared. Required fields are marked \*

Name \*

### SIGN UP TO OUR NEWSLETTER

Name

Email




Email \*

Website

Comment

You may use these [HTML](#) tags and attributes: `<a href="" title=""> <abbr title=""> <acronym title=""> <b> <blockquote cite=""> <code> <del datetime=""> <em> <i> <q cite=""> <s> <strike> <strong>`

two ×  = 2 

LATEST / MOST VIEWED / RELATED



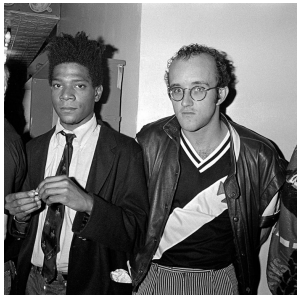
**George Gittoes**  
By John McDonald  
George Gittoes has been travelling the world for over forty years, visiting those regions that appear in brief, blood-spattered segments on the nightly news.



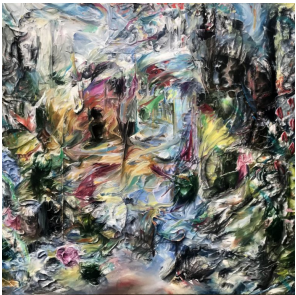
**Pedro Wonaeamirri**  
By John von Sturmer  
In Issue 39, John von Sturmer discusses how Pedro Wonaeamirri engages with ancient Tiwi teachings.



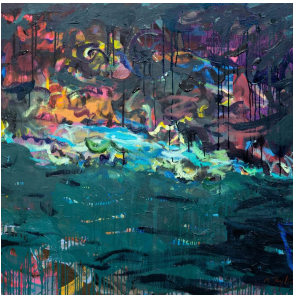
**Karla Dickens**  
By Kevin Wilson  
Lismore-based Wiradjuri artist Karla Dickens has long been involved in green politics. For Dickens it has all been said and no-one is listening – so...



**Keith Haring + Jean-Michel Basquiat**  
By Lee-Ann Joy  
'Keith Haring | Jean-Michel Basquiat: Crossing Lines' explores the intersecting lives of two of the most influential artists of the twentieth century.



**Josh Foley**  
By Artist Profile  
Josh Foley's visceral paintings create visually complex worlds that question the materiality behind the painted image.



**Michael Taylor**  
By Sasha Grishin  
Michael Taylor's expressionist compositions speak of an extraordinary intensity and energy maintained over a long and prolific oeuvre.



**Paul Davies**  
By Andrew Frost  
Paul Davis excavates unexpected



**Nyapanyapa Yunupingu**  
By Louise Martin-Chew  
Intrinsic to Nyapanyapa Yunupingu's



**all things are water**  
By Madeleine K Snow  
Water seeps into the dark hallways of The

resonances between the connected history of California and New South Wales.

practice is her innovative media and highly individual painterly expression that she describes as 'mayilimiriw' – meaningless.

Lock-up, a heritage listed former police station and lock-up in Newcastle.

[Subscribe to Artist Profile Magazine](#) | [RSS](#) | [Contact Us](#) | [Terms and Conditions](#) | [Privacy](#) | [Advertise](#) | (c) Artist Profile Pty Ltd